

Fixed flange PVC-U / PVC-C



General:

- Material: PVC-U / PVC-C
- Dimensions: DN15 – DN150
d20 – d160
- Flange classes : DIN 2501 PN10 / PN16
ANSI B 16,5 Class 150
JIS 10 K
DSV 2210-1 Suppl. 3

Connector types:

- Solvent socket DIN

Operating pressure:

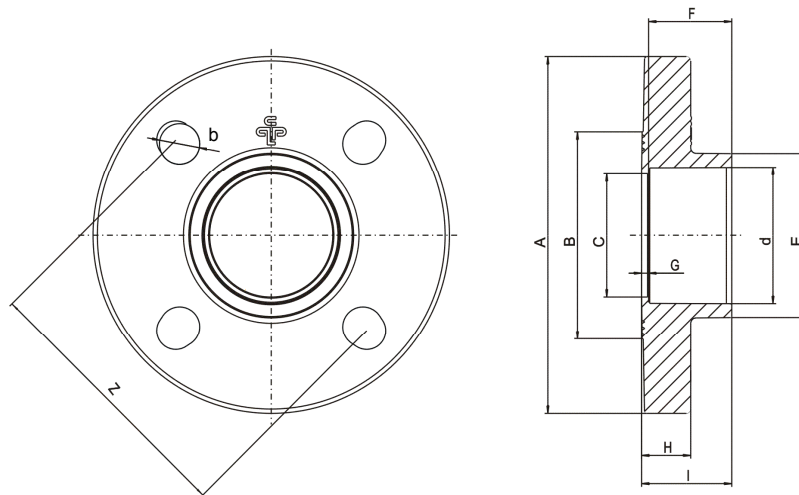
- DN15/d20 – DN150/d160 PN16

Technical features:

- Combined sealing surface
- Conical sealing surface
- Multi standards DIN, ANSI, JIS
- Marking of the maximum torque on fixed flange
- Flat gasket up to PN10
- Profile gasket with steel insert up to PN16

This document does not constitute a guarantee, it is for initial information purposes only. The product range is continually upgraded, the designs and types therefore only reflect the state of the art at the time of printing.
Subject to technical modifications!

Dimensions:



Flange dimensions										
Type ¹	DN	d	A	B	C	E	F	G	H	I
A/B	15	20	97	44	16	27	16,5	3,2	11,7	19,7
A/B	20	25	105	52	21	33	19,5	3,2	13,2	22,7
A/B	25	32	125	62	28	41	22,5	3,2	15,2	25,7
A/B	32	40	140	70	36	50	26	3,2	16,7	29,2
A/B	40	50	150	81	45	61	31,5	3,2	20,2	34,7
A/B	50	63	165	96	57	76	38,5	3,3	22,8	41,8
A	65	75	185	118	69	89,8	44	3,3	24,3	47,3
A	80	90	200	128	84	108,7	54	5,3	26,8	59,3
A	100	110	228,6	150	102	130,6	64	5	28	69
A	150	160	285	211	154	188	86	5	28	91

Dimensions in mm

Flange dimensions - boltings												
Type ¹	DN	d	threads	DIN 2501			ANSI Class 150			JIS 10 K		
				Z	b	number	Z	b	number	Z	b	number
A/B	15	20	M12	65	14	4	60,33	15,5	4	70	15	4
A/B	20	25	M12	75	14	4	69,80	15,5	4	75	15	4
A/B	25	32	M12	85	14	4	79,38	15,5	4	90	19	4
A/B	32	40	M16	100	18	4	89,00	15,5	4	100	19	4
A/B	40	50	M16	110	18	4	98,50	15,5	4	105	19	4
A/B	50	63	M16	125	18	4	120,65	19	4	120	19	4
A	65	75	M16	145	18	4	139,70	19	4	140	19	4
A	80	90	M16	160	18	8	152,40	19	8	150	19	8
A	100	110	M16	180	18	8	190,50	19	8	175	19	8
A	150	160	M20	240	22	8	241,3	22,2	8	240	23	8

Dimensions in mm

¹ Type A = PVC-U Type B = PVC-C

Fixed flange PVC-U / PVC-C

Bolt tightening torque for fixed flange with flat gasket										
DN	DN15	DN20	DN25	DN32	DN40	DN50	DN65	DN80	DN100	DN150
Nm	15	15	15	20	30	35	40	40	40	60

The bolts should be tighten diagonally and evenly.

1. hand-tighten the bolts so that the gasket is centered
2. tighten all bolts diagonally up to 50% of the recommended torque
3. afterwards up to 80% and
4. finally tighten up to the end value of the torque